



THE META SYSTEM • PRELIMINARY DATA SHEET

Designed by Artist / Acoustic Engineer - al cree

A new and exciting combination of pioneering acoustic form and function.

Fast, clean impulse response and huge efficiency across all speakers result in low distortion and unprecedented low frequency response. An uncompromising design, with the TerraHorn offering the longest commercial sub-horn pathlength available, accurately reproduces the lowest possible frequencies.

Mathematically precise contours and curves minimise surface diffraction and bandpass effects, making the whole system exceptionally smooth, linear and natural sounding. Designed as one, the TERRAMIDS effortless dynamics vs deceptive size allow them to be stowed inside the TERRAHORN.

The TERRATOPS physically interlock with the TERRAMIDS. Acoustically matched at the crossover point they array seamlessly on and off axis. The TERRATOP waveguides provide perfect linear off axis response, without 'beaming' like traditional diffraction based, constant-directivity horns.

Looking and sounding like a giant sci-fi hifi, practicality hasn't been forgotten. The system has space saving storage for the TERRAMIDS, balanced handle placements, and safety attachment points that lock together.

Easy to move and stack: <http://youtu.be/-d2v0GTUe68>

Space saving: http://youtu.be/WI3yb4Z_AVo

Perfect for cutting edge events, including arts experiments, live music, dance events, festivals, concerts.

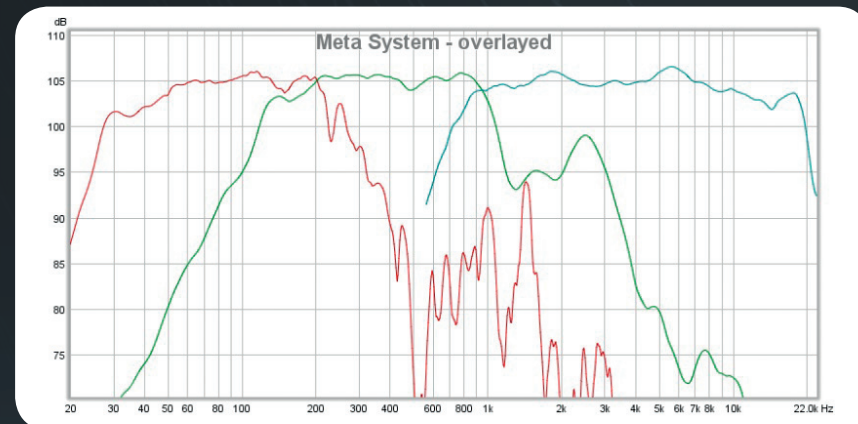
Fully modular deployment potential depending on event size. Rough guide:

2 stacks > 100 people • 4 stacks > 500 people • 6 stacks > 1000 people • 8 stacks > 2000 people • 12 stacks > 4000 people • 16 stacks > 6000 people

11c Cody Dock, South Crescent, Canning Town E16 4TL Phone: 07920269430 email: al@metaacoustics.com www.metaacoustics.com



Meta System Overlayed Frequency Response

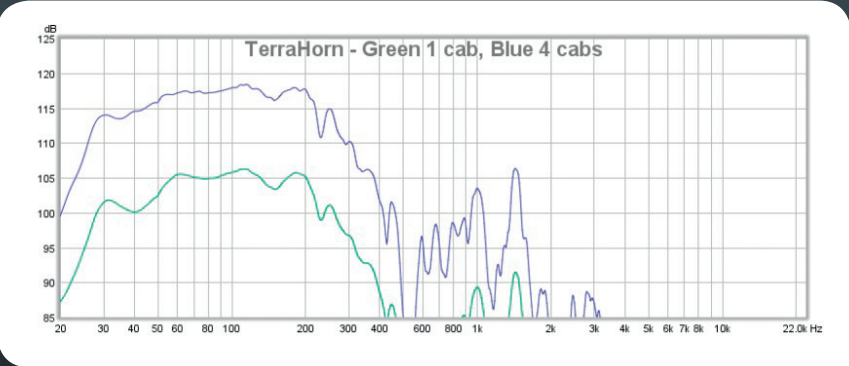




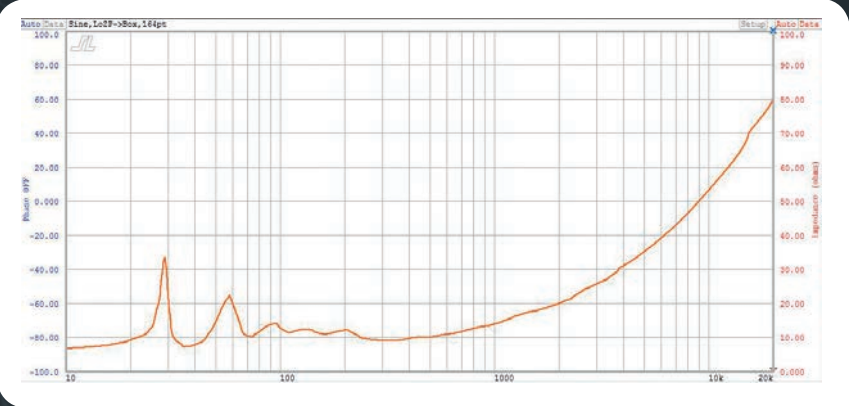
TERRAHORN PRODUCT SPECIFICATIONS

SENSITIVITY	106dB 1w/1m (one cab, half space) 137dB 800w rms (one cab, half space) 140dB 1600w program (one cab, half space)
FREQUENCY RESPONSE	+/- 3dB 28Hz-226Hz (one cab, half space) +/- 3dB 26Hz-226Hz (four cabs, half space)
CROSSOVER	One cab = 28Hz LR48dB HP / 121Hz LR24dB LP Four cabs = 26Hz LR48dB HP / 121Hz LR24dB LP Four cabs = Disengaged * HP / 121Hz LR24dB LP *for special effects clamped at <300w Only
HORN fC	26Hz Hyperbolic hybrid
DIMENSIONS (HxWxD)	1278mm x 610mm x 1578mm
WEIGHT	134kg
CONSTRUCTION	18mm Birch ply / Multi-laminate Birch / Tour grade coating Interlocking skids / 10 Handles / Transport wheels / Neutrik Speakons
OPTIONS	Colour / Connectors / Please contact to discuss

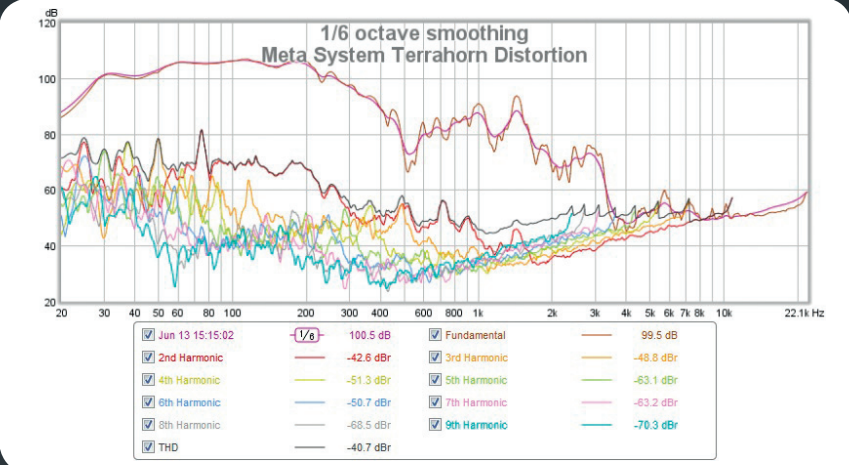
Meta System TERRAHORN Frequency Response

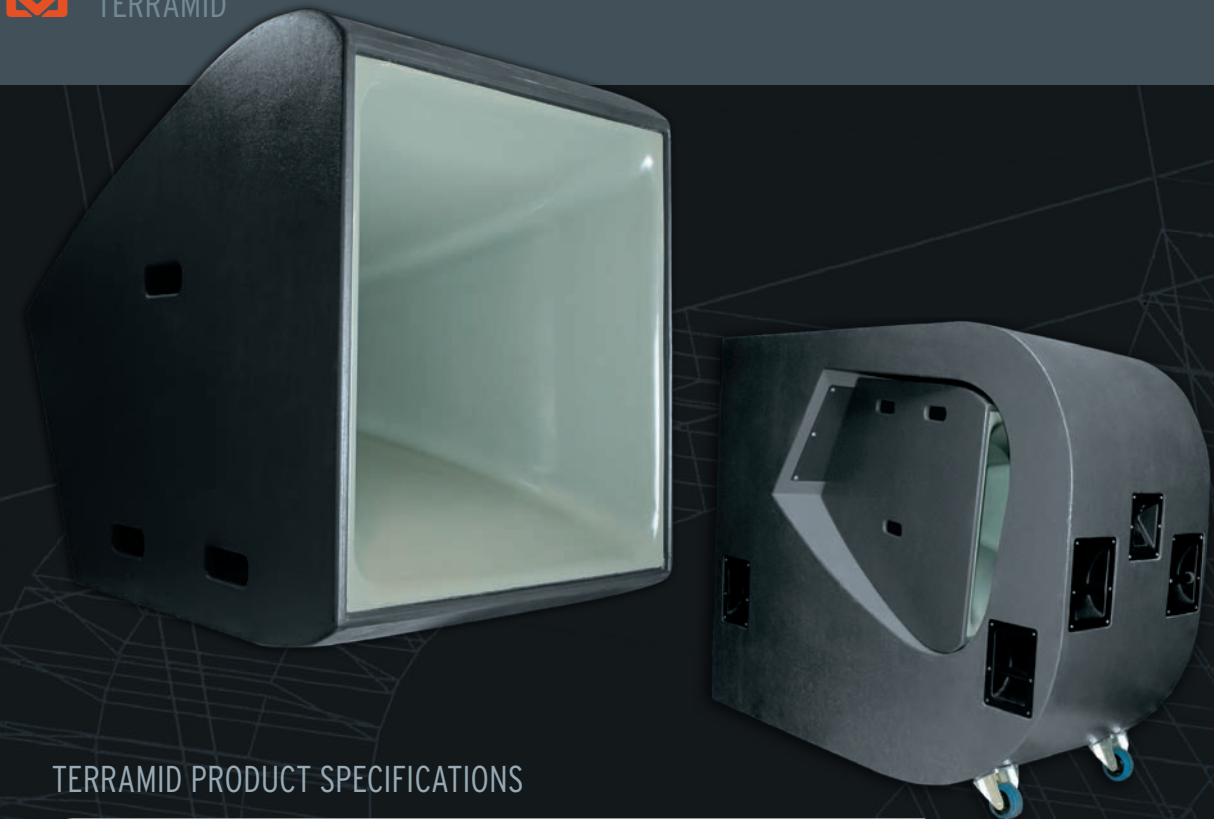


Meta System TERRAHORN Impedance



Meta System TERRAHORN Distortion

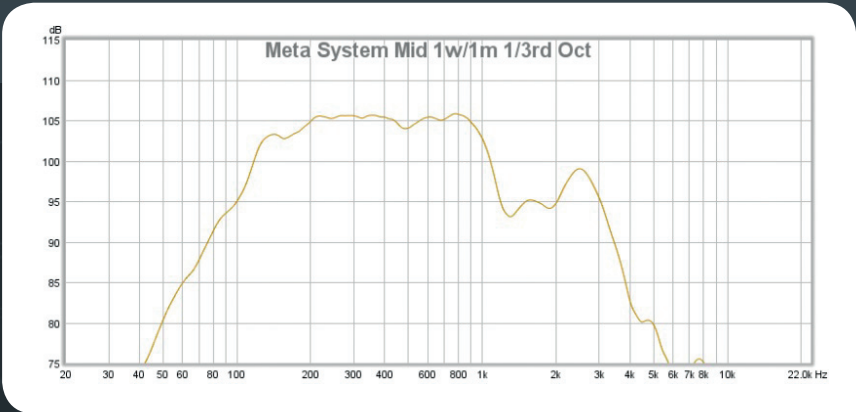




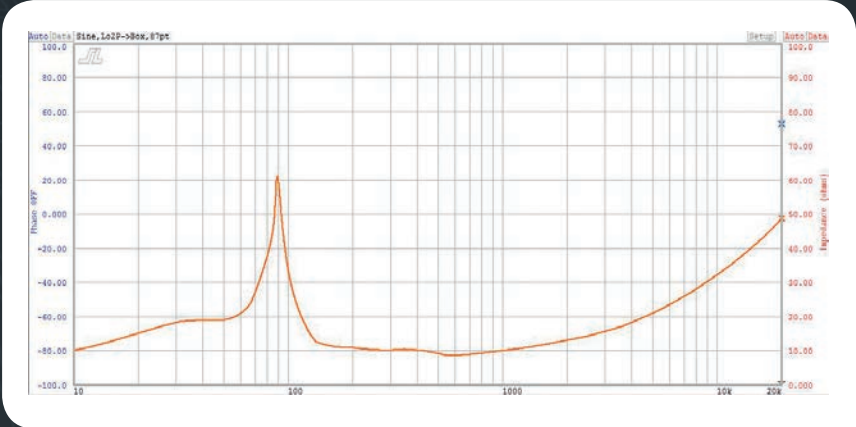
TERRAMID PRODUCT SPECIFICATIONS

SENSITIVITY	106dB 1w/1m (one cab, free space) 134dB 700w rms (one cab, free space) 137dB 1400w program (one cab, free space)
FREQUENCY RESPONSE	+/- 3dB 121Hz-1.078kHz (one cab, free space) +/- 3dB 90Hz-1.078kHz (four cabs, free space)
CROSSOVER	One cab = 121Hz LR24dB HP / 957Hz LR24dB LP Four cabs = 90-121Hz LR24dB HP / 957Hz LR24dB LP
DISPERSION	Aligned to Meta Top at X0 point>, becoming Omni below 400Hz
HORN fC	90Hz Tractrix (low-frequency extension will increase, as more cabs are added to create the ideal mouth size at fC)
DIMENSIONS (HxWxD)	702mm x 928mm x 610mm
WEIGHT	40kg
CONSTRUCTION	15mm & 18mm Birch ply / Multi-laminate Birch / Fibreglass / Tour grade coating Stacking feet / Interlocking connector plates / Handles / Neutrik Speakons
OPTIONS	Colour / Connectors / Handles / Flyware / Please contact to discuss

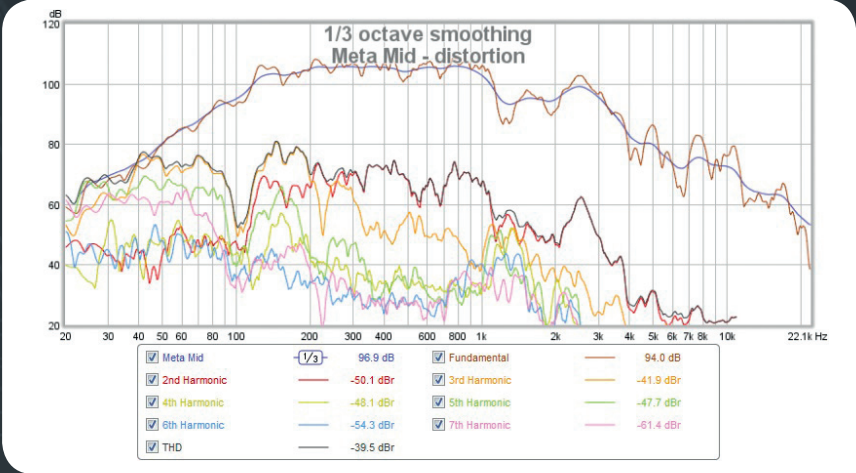
Meta System TERRAMID Frequency Response

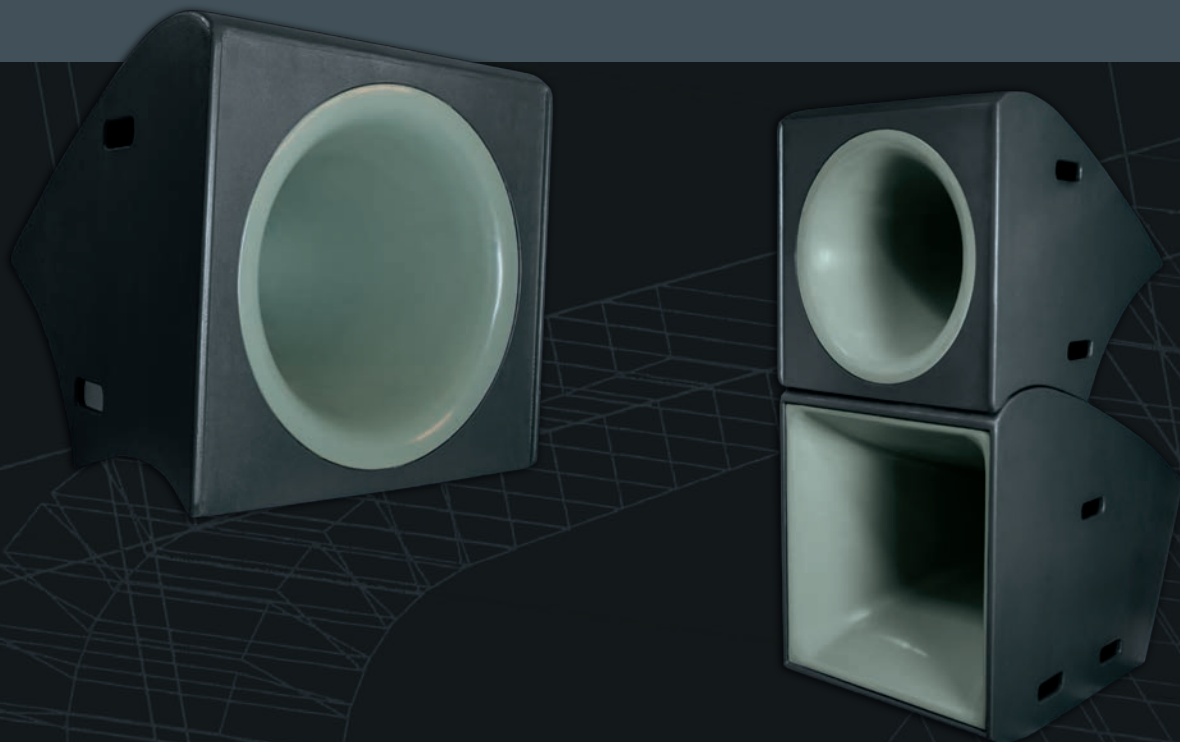


Meta System TERRAMID Impedance



Meta System TERRAMID Distortion

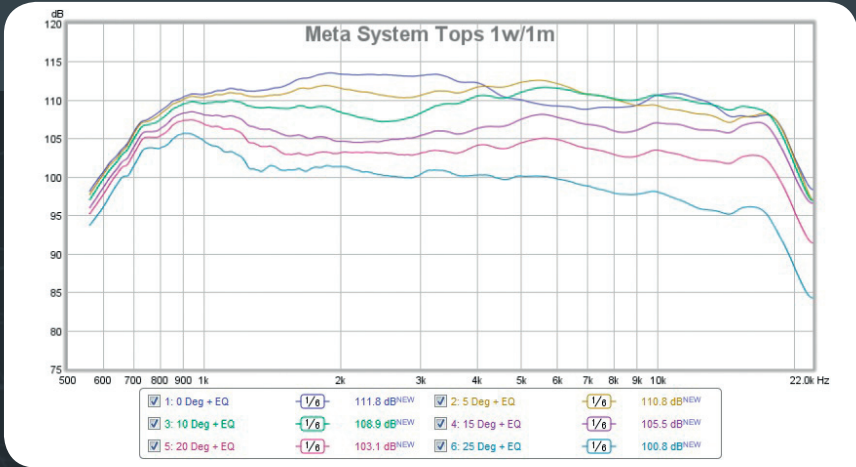




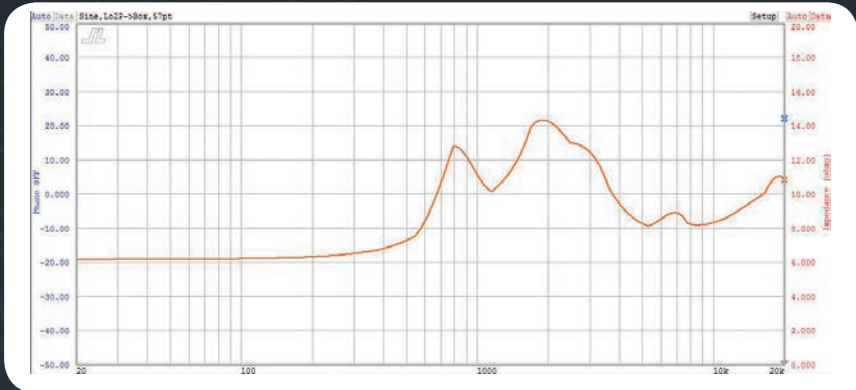
TERRATOP PRODUCT SPECIFICATIONS

SENSITIVITY	113dB 1w/1m (one cab, free space) 133dB 80w rms (one cab, free space) 136dB 160w program (one cab, free space)
FREQUENCY RESPONSE	+/- 3dB 756Hz-18.5kHz (one cab, free space) -10dB 600Hz-21kHz (one cab, free space)
CROSSOVER	957Hz LR24dB HP
DISPERSION	Nominal -6dB @ 40degrees, aligned to Meta Mid at XO point
WAVEGUIDE fC	630Hz Oblate Spheroid influence with Le'Cléac'h roundover
DIMENSIONS (HxWxD)	550mm x 610mm x 576mm
WEIGHT	20kg
CONSTRUCTION	15mm Birch ply / Multi-laminate Birch / Fibreglass / Tour grade coating Stacking feet / Interlocking connector plates / Handles / Neutrik Speakons
OPTIONS	Colour / Connectors / Handles / Flyware / Please contact to discuss

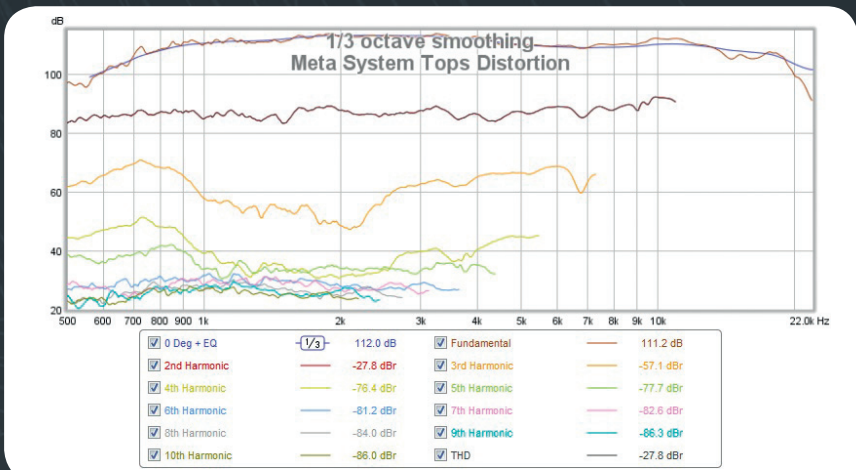
Meta System TERRATOP Frequency Response



Meta System TERRATOP Impedance



Meta System TERRATOP Distortion



META SYSTEM SIMULATED DIAPHRAGM DISPLACEMENT

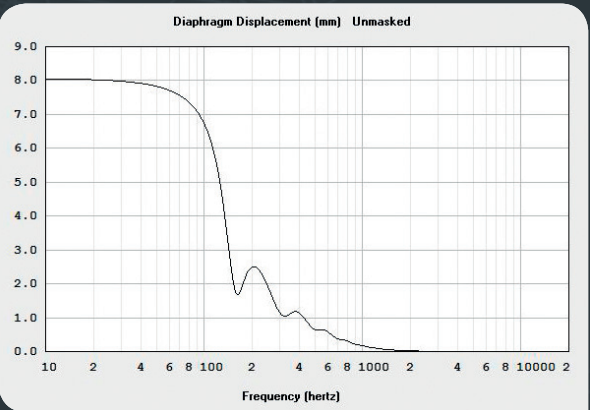
Meta System displacement charts, showing various input levels vs stacking.

This information is based on simulations of pure sinewave stimuli at calculated power. This is an aid to give an overview of correct HP and LP filter settings. Music level is often deemed more similar to pink noise with 6dB crest factor, and therefore 6dB less than these sinewave results. Music with high levels of sinewave type bass can come close though, so these charts should be considered. The last chart shows that with only 300w, the TERRAHORN can achieve subsonic, low-level, special effects by removing the HP filter.

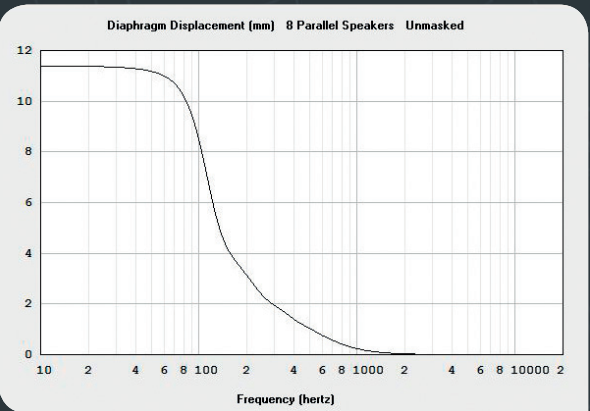
Although xmax is derived from various formulae we suggest, to prevent possible damage, to keep within these limits:

TERRAHORN = 11.5mm
TERRAMID = 7.5mm

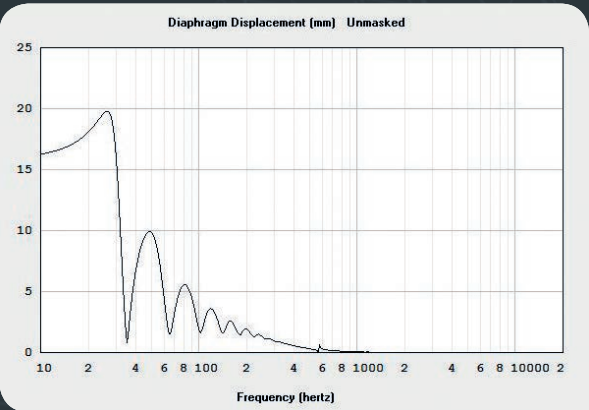
TERRAMID 700w x 1 free space



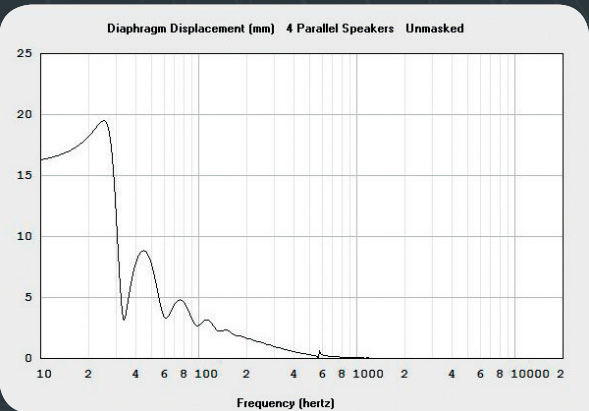
TERRAMID 1400w x 8 free space



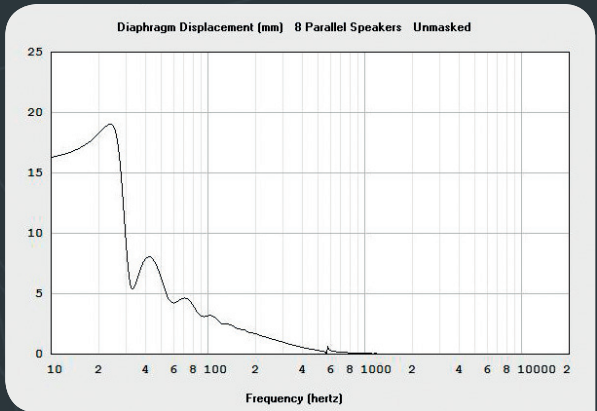
TERRAHORN 800w x 1 half space



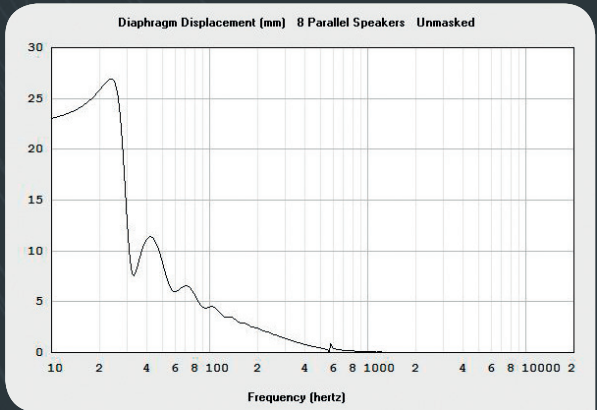
TERRAHORN 800w x 4 half space



TERRAHORN 800w x 8 half space



TERRAHORN 1600w x 8 half space



TERRAHORN 300w x 4 half space

